

EFFECTIVE
February 1, 2026
Price List Schedule

	Page
Glasswashers2
Undercounter Dishwashing Machines3
Door-Type Dishwashing Machines6
PRO Series Rack Conveyor Dishwashing Machines8
Rack Conveyor Options	10
PRO Series Upright Conveyor Dishwashing Machines	12
E-Series Upright Conveyor Dishwashing Machines	13
Upright Conveyor Options	15
Pot, Pan & Utensil Warewashing Machines	16
Powered Wash Sink Systems	19
Bi-Line Waste Handling Systems	20
Bi-Line by Champion Conveyor Systems	21
Terms & Conditions of Sale	22
Limited Warranty	23

Visit our website for the most up to date information
www.ChampionIndustries.com
www.BilineConveyors.com

Full listing of spec sheets and manuals available!

Glasswashers



CG

- 12" glass clearance
- 3 built-in chemical dispensers
- Self-flushing wash chamber
- Internal upper drain screen
- Cool fresh water rinse
- Approx. 1000, 2-1/2" glasses/hr.

All photography is for general visual representation only. Please refer to specifications for the latest detailed product information.



CG4 and CG6

- Fully automatic operation
- 3 built-in chemical dispensers
- 140°F wash
- Cool fresh water rinse
- Approx. 2,000, 2-1/2" glasses/hr.
- Right-to-left or left-to-right operation

Rotary Models		Standard Voltages	Approximate Shipping Wt.	Suggested List Price
CG	Rotary Glasswasher	208/230/60/1	204 lbs.	\$ 14,947
Pass Thru Models				
CG4	Pass Thru Glasswasher	208/230/60/1	227 lbs.	\$ 26,497
CG6	Pass Thru Glasswasher	208/230/60/1	297 lbs.	\$ 29,371

*Specify left-to-right or right-to-left operation when ordering.

Options

CG12	Stainless Steel Splash Guards for CG4 (2)		Shipped with machine	\$ 530
CG24	Stainless Steel Splash Guards for CG6 (2)		Shipped with machine	\$ 590
CG48	Stainless Steel Back for CG4		Shipped with machine	\$ 910
CG72	Stainless Steel Back for CG6		Shipped with machine	\$ 1,004
Kit 264	Washdown Hose		4 lbs.	\$ 530
Kit 332	Casters – Set of 4; 2 Locking, 2 Stationary		5 lbs.	\$ 1,219
CG47	Drain Tray and Waste Collector – This option entitles the purchaser to a full one year parts and labor warranty (CG, CG4, CG6)		2 lbs.	\$ 568
CG4	Quick Disconnect Package (includes casters)		10 lbs.	\$ 1,638
CHEM	Chemical Alarm Kit			\$ 1,606
CGH	CG High Hood option			\$ 1,870
CC208C	Kinetico Pro - Water Softener System			\$ 3,199

Glasswasher Warranty: One year parts and labor warranty per noted terms

NON STANDARD VOLTAGES: Contact Factory for availability and price. NOTE: Options prices apply only when ordered with machine.

Undercounter Dishwashing Machines

Standard Features

- “Multi-Phase” – allows for infield conversion from single to three phase with ease. Infield conversion should be provided by a qualified electrician
- “Shear Energy” – a reduction in energy requirements while maximizing performance
- Pumped drain
- Extended wash switch (UH230, UH330B, UH330ADA only)
- Top-mounted slide-out control cabinet
- Door safety switch
- 1-Hp wash pump motor
- Dual NSF Pot & Pan rated (UH230B, UH330B)
- Built-in booster heater (High Temp Only)
- 90-second time cycle (UH230 only)

- Detergent and rinse aid pumps standard
- Top and side panels standard
- (1) peg rack and (1) flat rack

★ **Rinse Sentry** monitors the booster temperature and automatically extends the cycle time to ensure 180°F final rinse. (High Temp Only)



Undercounter – High Temperature with Booster		Standard Voltages	Approx. Ship. Wt.	Booster Rise	Suggested List Price
UH-130B	Hot Water, with Built-in booster, fill and drain	208-240/60/1	215 lbs.	70°F (6kW)	\$ 10,365
UH-230B	Hot Water, with Built-in booster, fresh water rinse solid state controls – ENERGY STAR® Qualified	208-240/60/1	215 lbs.	70°F (6kW)	\$ 13,273
UH-330B	Heat Recovery, Built in Booster – ENERGY STAR® Qualified	208-240/60/1	215 lbs.	70°F (5kW)	\$ 14,303
UH-330ADA	First undercounter to fit under ALL ADA Counters! – ENERGY STAR® Qualified	208-240/60/1	215 lbs.	70°F (5kW)	\$ 14,528

Undercounter – Low Temperature

UL-130	Low Temp, no Booster, Fill and Drain	115/60/1	198 lbs.		\$ 9,725
---------------	--------------------------------------	----------	----------	--	-----------------

Options

ION Scale Prevention System					\$ 1,730
Racks, additional peg or flat racks (specify type)	each		7 lbs.		\$ 145
8" Stand to provide nominal 22" working height			15 lbs.		\$ 947
17" Stainless Steel Stand – to provide nominal 32" working height			20 lbs.		\$ 1,509
Water Pressure Regulating Valve (unmounted) (standard on UH-230B)			2 lbs.		\$ 368
Drain Water Tempering Kit (unmounted)					\$ 1,003
3 Phase Wiring (pre-wired at factory)					\$ 473
1" Roller Kit					\$ 340
Chemical Alarm Kit (mounted)					\$ 1,253
Power Cord Kit (single phase only) NEMA 14-50P					\$ 886
Drip Tray for Undercounters (top)					\$ 473
Door Interlock Switch (UH-330B & UH-330ADA)					\$ 451
CC208C Kinetico Pro - Water Softener System					\$ 3,199
4" Solid Sided Stand					\$ 551
Powder Coat					\$ 1,348

NON STANDARD VOLTAGES: Contact Factory for availability and price. NOTE: Options prices apply only when ordered with machine.

Champion®

The Dishwashing Machine Specialists

Dishwashing Machine Price List

Effective February 1, 2026

Supersedes all previous lists

Undercounter Dishwashing Machines

Standard Features

- "Multi-level racking system" - allows for maximum flexibility and increases wares capacity
- " Multi-Phase" – allows for infield conversion from single to three phase with ease. Infield conversion should be provided by a qualified electrician
- Pumped drain
- 1-Hp wash pump motor
- Stainless steel top & sides included
- Digital controls
- 15 ¾" overall chamber height with two interior racks
- Detergent and rinse pumps standard

- 316 stainless steel tank for improved corrosion resistance, an industry exclusive!
- ★ **Rinse Sentry** monitors the booster temperature and automatically extends the cycle time to ensure 180°F final rinse. (high temp only)



(UH130B MAX)

Undercounter – High Temperature with Booster		Standard Voltages	Approx. Ship. Wt.	Booster Rise	Suggested List Price
UH130B MAX	Hot Water, with Built-in booster, fill and drain	208-240/60/1	215 lbs.	70°F (6kW)	\$ 11,396

Options

ION Scale Prevention System					\$ 1,730
Racks, additional peg or flat racks (specify type)	each		7 lbs.		\$ 145
8" Stand to provide nominal 22" working height			20 lbs.		\$ 947
17" Stainless Steel Stand – to provide nominal 32" working height			20 lbs.		\$ 1,509
Drain Water Tempering Kit (unmounted)					\$ 1,003
3 Phase Wiring (pre-wired at factory)					\$ 473
1" Roller Kit					\$ 340
Chemical Alarm Kit (mounted)					\$ 1,253
Power Cord Kit (Single phase only)					\$ 886
Drip Tray for Undercounters (Top)					\$ 473
CC208C Kinetico Pro - Water Softener System					\$ 3,199
4" Solid Sided Stand					\$ 551
Powder Coat					\$ 1,348

NON STANDARD VOLTAGES: Contact Factory for availability and price. NOTE: Options prices apply only when ordered with machine.

Champion®

The Dishwashing Machine Specialists

Dishwashing Machine Price List

Effective February 1, 2026

Supersedes all previous lists

Fresh Water Rinse Undercounter Machine

Standard Features

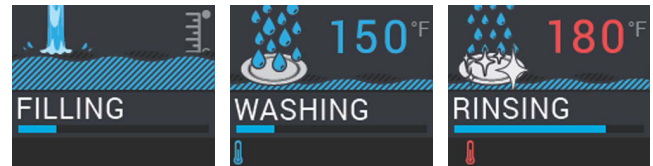
- **New Intuitive LCD Control Display** clearly identifies temperature and cycle time
- Solid state controls
- **Auto Clean** washes chamber at shutdown
- **Advanced Service Diagnostics**
- **Fill Sentry**- monitors incoming water pressure to ensure proper fill level and rinse performance
- **Drain Sentry**- monitors and ensures proper draining of machine
- **Rinse Sentry**- ensures proper 180°F/82°C final rinse temperature
- Automatic fill at start-up
- Robust, counter-balanced, double skin door, synonymous with Champion quality
- All standard peristaltic liquid detergent and

rinse-aid dispensing pumps, top and sides panels, 2 kW tank heater, flexible fill and drain lines with water strainer and pressure regulating valve for trouble-free operation

- **ENERGY STAR® Qualified**
- Low 0.84 US gal. (0.7 imp.gal/3.2l) water usage per rack
- Energy efficient - 30 amp. breaker with 70°F 4 kW booster heater (optional 6 kW available)
- 120 second cycle time. 30 racks per hour capacity
- Complete with one peg and one flat bottom rack (20" x 20" / 508mm x 508mm)



NEW LCD Display Graphics



Undercounter – High Temperature with Booster		Standard Voltages	Approx. Ship. Wt.	Booster Rise	Suggested List Price
UH140B	High temperature ★ Rinse Sentry High temperature w/built-in booster, fresh water rinse	208-240/60/1	165 lbs.	70°F (6kW)	\$ 10,489
Options					
ION Scale Prevention System					\$ 1,730
Racks, additional peg or flat racks (specify type)		each	7 lbs.		\$ 145
8" Stand - to provide nominal 22" working height			15 lbs.		\$ 947
17" Stainless Steel Stand – to provide nominal 32" working height			20 lbs.		\$ 1,509
Water Pressure Regulating Valve (unmounted) (standard on UH140B)			2 lbs.		\$ 368
Drain Water Tempering Kit (unmounted)					\$ 1,003
1" Roller Kit					\$ 340
Powder Coat					\$ 1,348
Drip Tray for Undercounters (Top)					\$ 473
CC208C Kinetico Pro - Water Softener System					\$ 3,199

NON STANDARD VOLTAGES: Contact Factory for availability and price. NOTE: Options prices apply only when ordered with machine.

Champion®

The Dishwashing Machine Specialists

Dishwashing Machine Price List
Effective February 1, 2026
 Supersedes all previous lists

Door-Type Dishwashing Machines

Standard Features

- Automatic tank fill
- Control circuit, 120-Volt
- Built-in stainless steel electric booster
- Detergent/chemical connection provisions
- Water pressure regulating valve — units ordered with booster (unmounted)
- Door safety switch
- Automatic drain valve
- Vent fan control
- Stainless steel enclosure panels
- Interchangeable upper and lower spray arms
- Low-water tank heat cut-off
- Racks: 1 peg rack and 1 flat rack

High Temperature		Standard Voltages	Approx. Ship. Wt.	Suggested List Price
DH6000	Electric (no booster)	208-240/60/1 or	300 lbs.	\$ 19,795
	Electric (70°F rise)	208-240/60/3 or 480/60/3		\$ 24,039
ENERGY STAR® Qualified				
DH6000-VHR	Ventless Heat Recovery Option	208-240/60/1 or	350 lbs.	\$ 31,708
	Electric (70°F rise)	208-240/60/3 or 480/60/3		
ENERGY STAR® Qualified				
DH6000	Electric (70°F rise)	208-240/60/1 or	300 lbs.	\$ 23,339
ENERGY STAR® Qualified				
DH3000	Electric	208-240/60/1 or 208-240/60/3	300 lbs.	\$ 16,180
Low Temperature				
DL2000	Electric	115/60/1	218 lbs.	\$ 13,2333



Options

Options	Suggested List Price
Drain Water Tempering Kit (mounted)	\$ 1,331
Peg or Flat Racks (specify type)	(each) \$ 145
Water Pressure Regulating Valve (unmounted – standard when machine has booster)	\$ 479
Shock Arrestor (unmounted)	\$ 162
Splash Shield (for corner DH3000) (mounted to machine)	\$ 504
Flanged Feet	\$ 301
Splash Shield (for corner DH6000) (mounted to machine)	\$ 780
Door Interlock Switch (standard on DH-6000-VHR; available on DH-6000 w/booster)	\$ 1,242
ION Scale Prevention System (unmounted)	\$ 2,163
Chemical Pumps (detergent and rinse aid, mounted and interwired) (DH6000 series only)	\$ 2,061
Two Point Electrical Connection (factory mounted and wired) (DH6000 series only)	\$ 173
Chemical Alarm Kit (factory mounted) (DL2000 only)	\$ 495
Pumped Drain	\$ 551
CC208C Kinetico Pro - Water Softener System	\$ 3,199
Direct Link Connectivity Solution	\$ 2,785
Direct Link Plus+ Connectivity Solution	\$ 3,342

NON STANDARD VOLTAGES: Contact Factory for availability and price. NOTE: Options prices apply only when ordered with machine.

Champion®

The Dishwashing Machine Specialists

Dishwashing Machine Price List

Effective February 1, 2026

Supersedes all previous lists

Door-Type Dishwashing Machines

Standard Features

- Large 27" opening for trays, sheet pans or 60-quart mixing bowl
- Adjustable cycle selector
- Automatic tank fill
- Automatic drain valve
- Door-activated cycle start
- Electric tank heat
- Low-water tank heat protection
- Pot and Pan rated
- PLC controller
- HMI Intuitive touchscreen display
- 2-Hp TEFC motor
- Door safety switch
- Interchangeable upper and lower spray arms
- Stainless steel enclosure panels
- Detergent/chemical connection provisions
- Racks: 1 peg rack and 1 flat rack

(DH6000T VHR)



Tall Hood Machines		Standard Voltages	Approx. Ship. Wt.	Suggested List Price
DH6000T	Electric (no booster)	208-240/60/1;		\$ 25,610
	Electric (70°F rise booster)	208-240/60/3	450 lbs.	\$ 29,999
	ENERGY STAR® Qualified	480/60/3		
DH6000T-VHR	Electric (70°F rise booster) Ventless Door Machine ENERGY STAR® Qualified	208-240/60/1; 208-240/60/3 480/60/3	525 lbs.	\$ 37,969

Options

Drain Water Tempering Kit (mounted)	\$ 1,331
Peg or Flat Racks (specify type)	(each) \$ 145
Sheet Pan Rack	(each) \$ 479
Water Pressure Regulating Valve (unmounted – standard when machine has booster)	\$ 479
Shock Arrestor (unmounted)	\$ 162
Flanged Feet	\$ 301
Splash Shield (for corner DH6000T) (mounted to machine)	\$ 869
Door Interlock Switch (standard on VHR; optional on standard w/booster)	\$ 1,242
ION Scale Prevention System (unmounted)	\$ 2,163
Chemical Pumps (detergent and rinse aid, mounted and interwired)	\$ 2,061
Two Point Electrical Connection (factory mounted and wired)	\$ 173
Pumped Drain (DH6000 series only) (factory installed)	\$ 551
CC208C Kinetico Pro - Water Softener System	\$ 3,199
Direct Link Connectivity Solution	\$ 2,785
Direct Link Plus+ Connectivity Solution	\$ 3,342

Warranty Option: Two year parts and labor

Contact Factory

NON STANDARD VOLTAGES: Contact Factory for availability and price. NOTE: Options prices apply only when ordered with machine.

Champion®

The Dishwashing Machine Specialists

Dishwashing Machine Price List
Effective February 1, 2026
 Supersedes all previous lists

Pro Series Rack Conveyors

PRO Series
 rack conveyor
 WAREWASHERS



(54 PRO)

Standard Features

- **NEW PRO**portional Rinse System – only 100 gallons of water per hour
- **NEW PRO**gressive Drive System
- Near constant movement of the dish rack equating to even consistency in washing and rinsing
- Patent pending design
- **PRO**digy controller
- Breakthrough in technology with HMI touchscreen
- Active alerts
- Auto delime
- Conveyor dwell
- Built-in machine operation and demo slides
- Service log and intelligent troubleshooting; saves service costs
- Heavy Duty Construction – all stainless steel and copper
- No plastic
- Solid frame
- Single piece hood and tank design.
- ENERGY STAR® Qualified

High Temperature – Single Tank (electric or steam)		Approx. Ship. Wt.	Suggested List Price
Model 44 PRO	(44" Single tank, electric) ENERGY STAR® Qualified	600 lbs	\$ 42,770
Model 54 PRO	(54" Single tank, electric) ENERGY STAR® Qualified	650 lbs	\$ 61,334
Model 66 PRO	(44" Single tank + 22" prewash, electric) ENERGY STAR® Qualified	600 lbs	\$ 67,461
Model 76 PRO	(54" Single tank + 22" prewash, electric) ENERGY STAR® Qualified	750 lbs.	\$ 88,570
Model 80 PRO-HD	(44" Single tank + 36" heavy duty prewash, electric) ENERGY STAR® Qualified	900 lbs.	\$ 79,207
Model 90 PRO-HD	(54" Single tank + 36" heavy duty prewash, electric) ENERGY STAR® Qualified	900 lbs.	\$ 97,938
High Temperature – Two Tank * (electric or steam)			
Model 64 PRO	(64" Two tank, electric) ENERGY STAR® Qualified	865 lbs.	\$ 86,515
Model 86 PRO	(64" Two tank + 22" prewash, electric) ENERGY STAR® Qualified	1015 lbs.	\$ 111,879
Model 100 PRO	(64" Two tank + 36" prewash, electric) ENERGY STAR® Qualified	1265 lbs.	\$ 128,828
High Temperature – with 22" Front Feed Prewash			
Model 66 PRO FF	(44" Single tank + 22" front feed prewash, electric) ENERGY STAR® Qualified	600 lbs.	\$ 74,356
Model 76 PRO FF	(54" Single tank + 22" front feed prewash, electric) ENERGY STAR® Qualified	900 lbs.	\$ 86,815
Model 86 PRO FF	(64" Two tank + 22" front feed prewash, electric) ENERGY STAR® Qualified	1200 lbs.	\$ 119,799

Above models available in any of the following voltages: 208/60/1; 240/60/1; 208/60/3; 240/60/3; 480/60/3.

*When ordering, please specify the direction of operation, voltage and phase.

NON STANDARD VOLTAGES: Contact Factory for availability and price. NOTE: Options prices apply only when ordered with machine.

Champion®

The Dishwashing Machine Specialists

Dishwashing Machine Price List

Effective February 1, 2026

Supersedes all previous lists

Pro Series Rack Conveyors - Ventless

PRO Series
rack conveyor
WAREWASHERS



(44 PRO VHR)

Standard Features

- **NEW** PROportional Rinse System – only 100 gallons of water per hour
- **NEW** PROgressive Drive System
- Near constant movement of the dish rack equating to even consistency in washing and rinsing
- Patent pending design
- PROdigy controller
- Breakthrough in technology with HMI touchscreen
- Active alerts
- Auto delime
- Conveyor dwell
- Built-in machine operation and demo slides
- Service log and intelligent troubleshooting; saves service costs
- Heavy Duty Construction – all stainless steel and copper
- No plastic
- Solid frame
- Single piece hood and tank design.
- ENERGY STAR® Qualified

PRO VHR Series: No Hood Required

Saving \$10,000s in Energy and Infrastructure!

- Same great features of the PRO series with the addition of the VHR System.
- VHR uses heat recovery to preheat incoming cold water to 160° before traveling to the booster.
- VHR System contains a heat pump that cools the exiting air to 70° or below.
- The same refrigerant gas also heats the wash tank during operation saving kW; thus eliminating the need for a hood and saving tens of thousands in energy, infrastructure and installation!

Ventless High Temperature – Single Tank			Approx. Ship. Wt.	Suggested List Price
Model 44 PRO VHR	(44" Single tank, VHR, electric) ENERGY STAR® Qualified		600 lbs.	Contact Factory
Model 54 PRO VHR	(54" Single tank, VHR, electric) ENERGY STAR® Qualified		650 lbs.	
Model 66 PRO VHR	(44" Single tank + 22" prewash, VHR) ENERGY STAR® Qualified		650 lbs.	
Model 76 PRO VHR	(54" Single tank + 22" prewash, VHR) ENERGY STAR® Qualified		750 lbs.	
Model 80 PRO-HD VHR	(44" Single tank + 36" heavy duty prewash, VHR) ENERGY STAR® Qualified		1055 lbs.	
Model 90 PRO-HD VHR	(54" Single tank + 36" heavy duty prewash, VHR) ENERGY STAR® Qualified		900 lbs.	
Ventless High Temperature – Front Feed Prewash				
Model 66 PRO FF VHR	(44" Single tank + 22" front feed prewash, VHR) ENERGY STAR® Qualified		650 lbs.	Contact Factory
Model 76 PRO FF VHR	(54" Single tank + 22" front feed prewash, VHR) ENERGY STAR® Qualified		750 lbs.	
Model 86 PRO FF VHR	(64" Two tank + 22" front feed prewash, VHR, electric) ENERGY STAR® Qualified		1200 lbs.	
Ventless High Temperature – Two Tank				
Model 64 PRO VHR	(64" Two tank, VHR, electric) ENERGY STAR® Qualified		865 lbs.	Contact Factory
Model 86 PRO VHR	(64" Two tank + 22" prewash, VHR, electric) ENERGY STAR® Qualified		950 lbs.	
Model 100 PRO-HD VHR	(64" Two tank + 36" heavy duty prewash, VHR, electric) ENERGY STAR® Qualified		1055 lbs.	

Above models available in any of the following voltages: 208/60/1; 240/60/1; 208/60/3; 240/60/3; 480/60/3; 575/60/3.

*When ordering, please specify the direction of operation, voltage and phase.

NON STANDARD VOLTAGES: Contact Factory for availability and price. NOTE: Options prices apply only when ordered with machine.

Pro Series Rack Conveyors Options



Tank Heat (specify one)	Suggested List Price
Electric with Thermostat and Low-Water Cutoff	Standard – No Charge
Stainless Steel Closed Steam Coil or Injector with Thermostat and Low-water cutoff	
Single Tank (PRO Series) (not available on the VHR series)	\$ 4,367
Two Tank (PRO Series) (not available on the VHR series)	\$ 5,130
Options	
Heat Recovery System (must include factory installed built-in booster) (not available on the VHR series)	\$ 8,622
Blower Dryer – Steam or Electric (Shipping wt. : 600 lbs.) (not available on the VHR series)	\$ 20,207
Chemical Pump Kit (detergent and rinse aid, mounted and interwired)	\$ 2,131
Racks: Peg or Flat Racks (specify type)	(each) \$ 162
Sheet Pan Rack	\$ 518
Insulated Tray/Steam Table Pan Rack	\$ 574
Vent Cowls with 7" Stacks and Locking Dampers	\$ 2,818
Custom Vent Cowls with 7" Stacks and Locking Dampers	\$ 3,136
Extended Vent Cowls, with 7" Stacks, Locking Dampers & External Curtain	(set) \$ 3,063
Custom Extended Vent Cowls, with 7" Stacks, Locking Dampers & External Curtain	(set) \$ 3,063
Splash Shields	(set) \$ 702
Water Pressure Regulating Valve (unmounted; standard with booster)	\$ 518
Table Limit Switch (unmounted) (whisker style)	\$ 789
Table Limit Switch (unmounted) (button style)	\$ 789
Shock Arrestor (factory mounted) (unmounted)	\$ 206
Drain Water Tempering Kit (unmounted)	\$ 2,272
Flanged Feet (factory installed)	\$ 702
ION Scale Prevention System (factory mounted) (unmounted)	\$ 2,909
Direct Link Connectivity Solution	\$ 3,342
Direct Link Plus+ Connectivity Solution	\$ 5,013
Kinetico Pro - CC208C Water Softener System	\$ 3,199
High Hood (Extended vertical clearance through machine two tank conveyors - Clearance 24")	\$ 3,982
High Hood (Extended vertical clearance through machine single tank conveyors - Clearance 24")	\$ 2,935
Stainless Steel Rear Enclosure Panels	Contact Factory
Booster Heaters (Shipping Weight: 150 lbs.) All prices reflect mounted and piped boosters.	
PRO Electric (44 PRO Family, 64 PRO Family)	40°F / 70°F rise \$ 7,558
PRO Steam (not available on the VHR series)	40°F / 70°F rise \$ 8,544

NON STANDARD VOLTAGES: Contact Factory for availability and price. NOTE: Options prices apply only when ordered with machine.

Champion®

The Dishwashing Machine Specialists

Dishwashing Machine Price List

Effective February 1, 2026

Supersedes all previous lists

Pro Series Rack Conveyors Options

PRO Series
rack conveyor
WAREWASHERS



PRO-90B Loader

90° Corner Conveyor Table (shown)
PRO Series Only



PRO-90B Unloader

90° Corner Conveyor Table (shown)
PRO Series Only



Cantilever Sideloader
(No hood)



**Model RCT 64
or RCT 84**

Roller Conveyor Table

PRO Series Rack Conveyor Machine Systems			Approx. Ship. Wt.	Suggested List Price
PRO-90B – 90° Unloader Corner Conveyor Table			200 lbs.	\$ 14,754
PRO-90B – 90° Loader Conveyor Table				\$ 14,754
RCT 64 – 64" Roller Conveyor Table (mobile or stationary)			90 lbs.	\$ 8,962
RCT 84 – 84" Roller Conveyor Table (mobile or stationary)			115 lbs.	\$ 11,702
Non-standard Lengths (must be ordered in 10" increments)				Contact Factory
Cantilever Sideloader	No Hood	24"		\$ 10,571
		30"		\$ 16,364
Extended Pawl Bar (extended drive unit) (only available on PRO Series Machines)				Contact Factory

NON STANDARD VOLTAGES: Contact Factory for availability and price. NOTE: Options prices apply only when ordered with machine.

Champion[®]

The Dishwashing Machine Specialists

Dishwashing Machine Price List
Effective February 1, 2026
 Supersedes all previous lists

Upright Conveyor PRO-Series



Standard Features

- **NEW** 8" Touchscreen control
- **NEW** Automatic Drains
- **Exclusive Dual Rinse Technology**
- Advanced operator guidance
- All-purpose 29"-wide peg belt (SlimLine 24" belt available)
- Chemical dispensing equipment connection provisions
- Choice of tank heat: electric, steam coils or direct steam injectors
- On-board diagnostics
- Step-by-step troubleshooting assistance
- Common hot water connection
- Common drain connection
- Common electric connection (separate connection required for optional electric booster and blower-dryer)
- One piece stainless steel wash/rinse manifold system, easy to remove
- Automated delime function
- Electric eye energy sentinel (idle pump shut-off)
- Easy-to-reach top-mounted controls
- Heavy-gauge stainless construction
- Push-button start-stop station – load end
- Recirculating flushing nozzles – load end with prewash
- Rinse saver device
- Conveyor shut-off shelf – unload end
- Stainless steel enclosure panels – front & ends

General Information

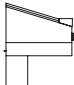
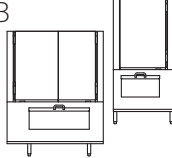
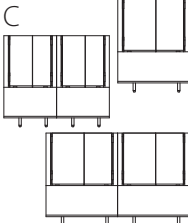
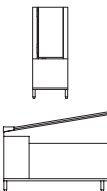
The Champion Upright Conveyor dishwashing machines consist of modular sections: load, prewash, wash-rinse, Dual Rinse and unload. Each section is available in a choice of lengths to provide maximum space, labor and production efficiency. To accommodate various production levels and ware sizes, select from two (2) conveyor widths.

- **PRO Flight Series Slim:**
24" wide conveyor belt
- **PRO Flight Series:**
29" wide conveyor belt

ENERGY STAR Rated Models:

PRO Flight 4, PRO Flight 6, PRO Flight 8, PRO Flight 4 Slim, PRO Flight 6 Slim, PRO Flight 8 Slim



Sectional Construction	
A	
	<p>* LOAD</p> <p>A 2.5 ft. minimum length. For more loading area, order in 1 ft. increments. * 2.5 ft. load is of cantilever design</p>
B	
	<p>PREWASH</p> <p>B 2.5 ft. prewash with standard external scrap basket and 1-Hp pump motor. B4 4 ft. prewash with optional external scrap basket. 3-Hp pump motor is standard.</p>
C	
	<p>WASH – RINSE</p> <p>C4 4 ft. wash for CW and C Series (Contact factory for application)</p>
	<p>C6 6 ft. wash-rinse combination for CW and C Series</p> <p>C8 8 ft. wash-rinse combination for CW and C Series</p>
D	
	<p>DUAL – RINSE / UNLOAD</p> <p>D2 2 ft. Water Saver Section</p> <p>D5 5 ft. Unload Section (minimum) Minimum 5 ft. length (Contact factory for application) Additional length available in 1 ft. increments for greater drying efficiency.</p>

(Additional options available upon request)

NON STANDARD VOLTAGES: Contact Factory for availability and price. NOTE: Options prices apply only when ordered with machine.

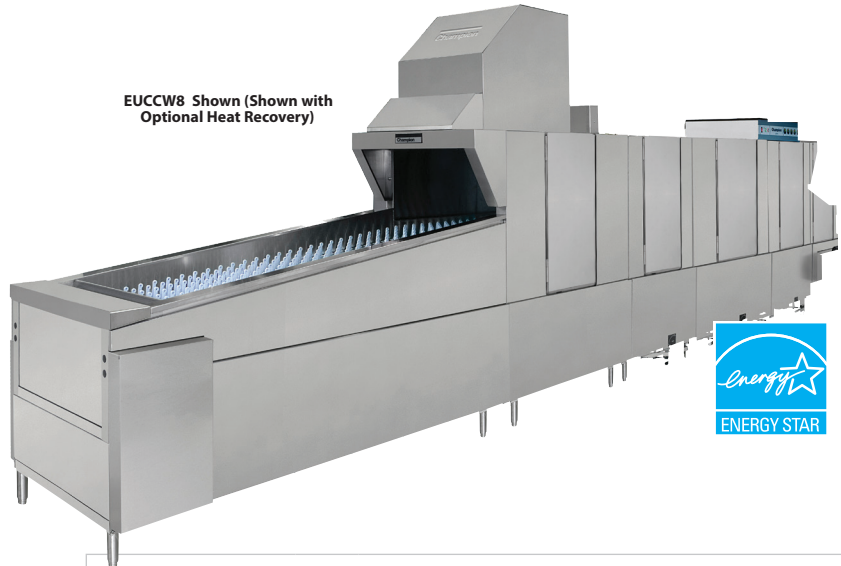


Upright Conveyor E-Series

Standard Features

- **Exclusive Dual Rinse Technology**
- All-purpose 29"-wide peg belt (**SlimLine** 24" belt available)
- Chemical dispensing equipment connection provisions
- Choice of tank heat: electric, steam coils or direct steam injectors
- Common hot water connection
- Common drain connection
- Common electric connection (separate connection required for optional electric booster and blower-dryer)
- One piece stainless steel wash/rinse manifold system, easy to remove
- Electric eye energy sentinel (idle pump shut-off)
- Easy-to-reach top-mounted controls
- Heavy-gauge stainless construction
- Push-button start-stop station – load end
- Recirculating flushing nozzles – load end with prewash
- Rinse saver device
- Conveyor shut-off shelf – unload end
- Stainless steel enclosure panels – front & ends
- Keep it Clean Package
 - Auto Delime
 - Wash Down

EUCCW8 Shown (Shown with Optional Heat Recovery)



General Information

The Champion Upright Conveyor dishwashing machines consist of modular sections: load, prewash, wash-rinse, Dual Rinse and unload. Each section is available in a choice of lengths to provide maximum space, labor and production efficiency. To accommodate various production levels and ware sizes, select from two (2) conveyor widths.

- **EUCC Series:** 24" wide conveyor belt
- **EUCCW Series:** 29" wide conveyor belt

ENERGY STAR Rated Models: EUCC4, EUCC6, EUCC8, EUCCW4, EUCCW6 and EUCCW8

Sectional Construction	
A 	* LOAD A 2.5 ft. minimum length. For more loading area, order in 1 ft. increments. * 2.5 ft. load is of cantilever design
	PREWASH B 2.5 ft. prewash with standard external scrap basket and 1-Hp pump motor. B4 4 ft. prewash with optional external scrap basket. 3-Hp pump motor is standard.
C 	WASH – RINSE C4 4 ft. wash for CW and C Series (Contact factory for application) C6 6 ft. wash-rinse combination for CW and C Series C8 8 ft. wash-rinse combination for CW and C Series
	DUAL – RINSE / UNLOAD D2 2 ft. Water Saver Section D5 5 ft. Unload Section (minimum) Minimum 5 ft. length (Contact factory for application) Additional length available in 1 ft. increments for greater drying efficiency.

(Additional options available upon request)

NON STANDARD VOLTAGES: Contact Factory for availability and price. NOTE: Options prices apply only when ordered with machine.

Upright Conveyor (PRO Series & E-Series)

Modular Sections For EUC Series Dishwashing Machines

Load (A)	2.5' Load (minimum load section) (3 ft. load section is a cantilever design)	
	Additional lengths available in 6". increments	
Prewash (B)	2.5' Prewash	with external scrap basket (standard)
	4' Prewash	without external scrap basket with external scrap basket
Wash-Rinse (C)	4' Wash (contact factory for application)	
		without external scrap basket with external scrap basket
	6' Wash-Rinse Combination	
		without external scrap basket with external scrap basket on wash and/or rinse
	8' Wash-Rinse Combination	
		without external scrap basket with external scrap basket on wash and/or rinse
Dual Rinse / Unload (D)	5' Unload (5' minimum unload section) (contact factory for application)	
	Additional lengths available in 1 ft. increments	
Approximate Shipping Weight:	EUCC Series: 150 lbs. per foot	
	EUCCW Series – Dual Rinse Series: 175 lbs. per foot	

Standard Tank Heat (specify one)

	Electric heaters with thermostat and positive low-water cut-off
	Closed stainless steel coils with thermostat and positive low-water cut-off
	Steam injectors with thermostat and positive low-water cut-off
NOTE: Booster Optional	Built-in steam boosters as well as built-in electric boosters are available on all unload sections. Built-in steam booster requires a minimum 6ft. unload

For Pricing on Upright Conveyors – Contact Factory

Upright Conveyor (PRO Series & E-Series)

Options

- Heat Recovery
- 48" Blower dryer - steam or electric
- Back Panel, stainless steel
- Direct Link Connectivity Solution (PRO series only)
- Direct Link Plus+ Connectivity Solution (PRO series only)
- Kinetico Pro - CC208C Water Softener System
- Keep it Clean Package (E-Series Only)
 - Delime
 - Wash Down
- Belts, all purpose peg belt, standard
 - Flat Belt
 - Oval Tray Conveyor
 - Insulated Tray Belt
 - Sheet Pan Belt
 - Belts with Upper Rods
 - BELTS – ANY COMBINATION OF ABOVE
 - (Belt with all stainless steel components for correctional applications – special order only)
- Bumper Rail – machine mounted
- Cold Water Thermostat (for prewash)
- Conveyor, Variable Speed, Electric (standard with Quad Rinse)
- Doors, 1-piece lift out for low ceiling installations
- Insulated Hinged Doors
- Drain Interlock Switches
- Motor, Pump, 3-Hp (optional in lieu of 1-Hp on 2.5 ft. prewash)
- Split Unload (D Section)

- Start/Stop Station, Unload End
- Steam Pressure Regulating Valve (unmounted)
- Water Pressure Regulating Valve (mounted)
(standard with built-in booster)

Champion Steam Booster

(Built-in) (Shipping weight: 75 lbs.)
EUCC/EUCCW (40°F max. rise)
EUCC/EUCCW (70°F max. rise)

Champion Electric Boosters

(Built-in) (Shipping Weight: 150 lbs.)
EUCC/EUCCW (40°F max. rise)
EUCC/EUCCW (70°F max. rise)

NOTE:

- Electric Boosters – contact factory for location
- Available Voltages: 208/60/3; 240/60/3; 480/60/3
- For Non-Standard Voltages, contact factory

Installation Supervision (within the Continental U.S.):
Provided by factory authorized personnel at no additional cost for ONE day during regular working hours only. The warranty will begin after factory supervision and approval is completed. Subject to standard warranty terms.

Allow 2 weeks for scheduling Factory supervision.

For Pricing on Upright Conveyors – Contact Factory

NOTE: Options prices apply only when ordered with machine.

Champion®

The Dishwashing Machine Specialists

Dishwashing Machine Price List
Effective February 1, 2026
 Supersedes all previous lists

Pot, Pan & Utensil Warewashing Machines

Standard Features

- Tank heater electric (steam coil or steam injector optional)
- Low-water tank heat cut-off
- 7.5-Hp drip-proof wash pump motor
- Control circuit, 120-Volt
- Counter-balanced door system
- Detergent/chemical connection provisions
- Door safety switch on each door
- Stainless steel enclosure panels (front and sides)
- Interchangeable upper and lower wash and rinse arm
- Fully-automatic wash and rinse cycle
- External lift-out refuse basket
- Recessed, front-mounted controls
- Integral 6" shelf on front-loading model
- Hold-down grid for light ware protection
- Automatic tank fill
- Vent connection, 6" diameter
- Rack Bake Sheet
- Utility Rack

Note: When ordering PP-28, specify type and quantity of optional racks required.



Pot, Pan & Utensil		Standard Voltages	Approx. Ship. Wt.	Suggested List Price
PP-28	Straight-through, corner or front-loading operation	208-240/60/3 480/60/3	800 lbs.	Contact Factory

Tank Heat (specify one)

Electric heat with thermostat and low-water cut-off	Standard – No Charge
Stainless steel closed steam coil with thermostat and low-water cut-off	Contact Factory

Options

Exhaust fan (1/3-Hp)	65 lbs.	Contact Factory
Rack: Bake Sheet, Stainless Steel		Contact Factory
Rack: Basket, Stainless Steel		Contact Factory
Rack: Counter Pan, Stainless Steel		Contact Factory
Rack: General Utility, Stainless Steel		Contact Factory
Water Pressure Regulating Valve (unmounted) (standard with built-in booster)		Contact Factory
ION Scale Prevention System (unmounted)		Contact Factory

Booster Heaters Shipping Weight: 150 lbs. All prices reflect mounted and piped boosters.

Steam (stainless steel)	40°F rise - Built-in (externally mounted with cover – corner models)	Contact Factory
	70°F rise - Built-in (externally mounted with cover – corner models)	Contact Factory
Electric (stainless steel)	40°F rise - Built-in (externally mounted with cover on corner models)	Contact Factory
	70°F rise (externally mounted with cover)	Contact Factory

NOTE: Options prices apply only when ordered with machine. **NOTE:** For low pressure steam application, contact Factory.

Drain Water Tempering Kit (unmounted)	Contact Factory
Kinetico Pro - CC208C Water Softener System	Contact Factory

NON STANDARD VOLTAGES: Contact Factory for availability and price. **NOTE:** Options prices apply only when ordered with machine.

Pot, Pan & Utensil Warewashing Machines

Utensil Washers	Electric Tank Booster Heater Suggested List Price	Steam Tank & Booster Heater Suggested List Price
Model PP-10	\$ 54,494	\$ 62,860
Model PP-12-PT	\$ 74,567	\$ 79,959
Model PP-12-CPT	\$ 88,174	\$ 96,607
Model PP-20	\$ 67,583	\$ 82,142
Model PP-20-PT	\$ 98,690	\$ 120,378
Model PP-36	\$ 106,588	\$ 128,711

Options	Suggested List Price
Steam Extraction Fan (all models except PP-20-PT & PP-36)	\$ 1,621
Steam Extraction Fan (PP-20-PT & PP-36)	\$ 4,044
Single Phase Wash Pump Motor (PP-10)	\$ 3,225
Single Phase Wash Pump Motor (PP-12-PT, PP-12-CPT, PP-20, PP-20)	\$ 4,807
Automatic Drain (All models except PP-10)	\$ 4,185
Stainless Steel Pumped Rinse System with Electric/Gas/Steam Coil Booster Heater (PP-36, PP-20-PT)	\$ 11,362
Utensil Rack with Hold-Down Lid	\$ 1,621
Stainless Steel Mesh Utensil Basket with Hinged Lid	\$ 1,053
Molded Plastic Utensil Basket for Small Items	\$ 262
Stainless Steel Insert for Tray/Sheet Pans (PP-10, PP-20, PP-36)	\$ 1,282
Stainless Steel Insert for Muffin/Cake Pans (PP-10, PP-20, PP-36)	\$ 1,282
Tray/Sheet Pan Rack (PP-10, PP-12-PT, PP-12-CPT, PP-20, PP-20-PT)	\$ 1,565
Stainless Steel Muffin/Cake Pan Rack (PP-10, PP-12-PT, PP-12-CPT, PP-20, PP-20-PT)	\$ 1,565
Lift or Split Door (PP-10, PP-20, PP-36)	No Charge
Drain Water Tempering Kit (PP-28, un-mounted)	\$ 2,317
Drain Water Tempering Kit (All Pan Washers, un-mounted)	\$ 2,595
Stainless Steel Nozzles	\$ 757
ION Scale Prevention System (unmounted)	Contact Factory
Vent Fan Control Switch	\$ 534
Kinetico Pro - CC208C Water Softener System	\$ 3,199

NON STANDARD VOLTAGES: Contact Factory for availability and price. NOTE: Options prices apply only when ordered with machine.

Pot, Pan & Rack Warewashing Machines

Rack Washers

- RW-36 (electric or steam booster)
- RW-54 (electric or steam booster)
- RW-66 (electric, gas or steam booster)
- RW-72 (electric, gas or steam booster)

Options

- Automatic Drain
- External Wash-down Hose
- Steam Extraction Fan
- Fold Away Ramp System
- Additional Pit Grid
- Water Pressure Regulator
- Rinse Tank with Steam Coil Booster Heater (N/A to 3072)
- Stainless Steel Pumped Rinse System with Electric/Gas/Steam Coil Booster Heater (standard on 3072)
- Stainless Steel Hood Assembly
- Stainless Steel Hood Assembly with Steam Extraction Fan
- Pass-Thru Second Door and Extended Cabinet

Roll-in Rack Options (Stainless Steel) for Models 1536-N, 2554, 2566 and 3072

- Tray/Sheet Pan Rack
- Pot and Utensil Rack
- Sheet, Cake and Muffin Rack
- Tray/Sheet and Steam Pan Rack
- Steam Table Pan Rack
- Cake Pan Rack

NOTE: For Pot and Pan Washers listed on pages 15 & 16, specifications and terms will be those in effect at the time of shipment, and prices are subject to change without notice.

NOTE: Standard Champion warranty, terms and conditions apply except freight which is ex. works, Clearwater, Florida.

For pricing on above Pot, Pan and Rack Machines – Contact Factory

NOTE: Options prices apply only when ordered with machine.

Powered Wash Sink System

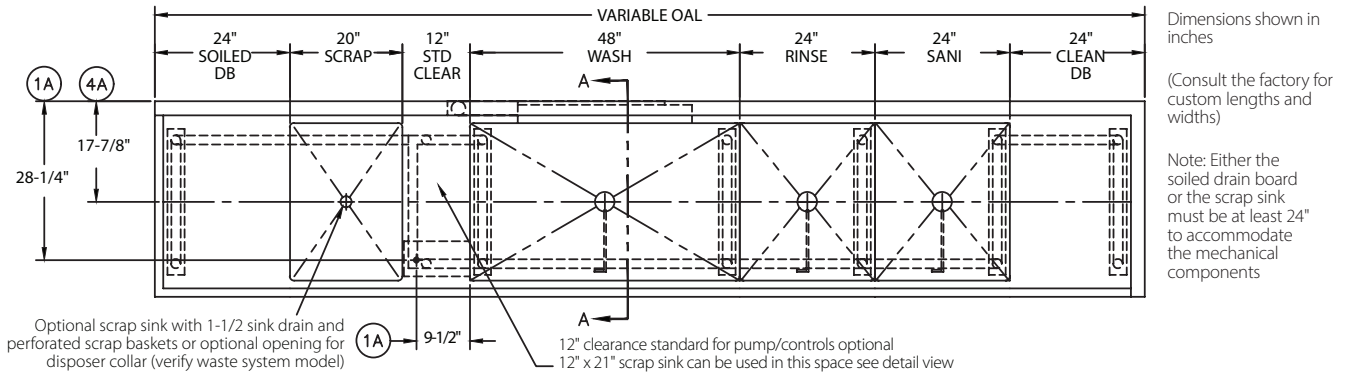
Vortex Wash System

- **NEW: Redesigned wash flow system**
Outperforms the leading brands.
- Factory authorized startup
- Type 304 polished stainless steel construction
- 14 gauge stainless tanks and drain boards
- 11" high x 2-1/2" deep back splash
- Twist handle drains
- Stainless steel legs and cross rails
- Stainless steel adjustable bullet feet
- Stainless steel pump and impeller
- Rear discharge
- Removable strainer plates
- One 3 Hp fully enclosed wash pump motor with permanently sealed bearings
- Motor overload protection, manual reset
- Low water protection for wash pump motor
- 3,000 watt wash tank heater
- 1 year parts and labor on pumps and control panel



**Ask about our NEW
Skewer Washer**

**** Consult the factory for custom lengths and widths and for pricing on Powered Wash Sink Systems ****



A	B	C	D	E	F	G	H	
Edge Type	Drain Board By nominal inch	Scrap Sink	Wash Tank	Options	Rinse Sink	Sanitizer Sink	Drain Board	Edge Type
M 1-1/2" Rolled M 2-1/2" Splash	M 12" M 18" M 20" M 24" M 36" M 42" M 48" M 54" M 60" M w/Disposer Collar	M 18" M 20" M 24" Custom M w/Scrap Basket	M 36" M 42" M 48" M 60"	M Utensil Basket M Sheet Pan Racking System	M Omit M 20" M 24" M 36"	M Omit M 20" M 24" M 36"	M Omit M 12" M 18" M 20" M 24" M 36" M 42" M 48" M 54" M 60"	M 1-1/2" Rolled M 2-1/2" Splash

NON STANDARD VOLTAGES: Contact Factory for availability and price. NOTE: Options prices apply only when ordered with machine.

Waste Handling System (Pulpers)



The Sonic PRO series food waste reduction system by Bi-Line Conveyor Systems can reduce organic waste volume by as much as **85 percent** and can process all organics including: produce, fruits, cut flowers, meat, fat trimmings, paper napkins, coffee grounds, spoiled milk, deli products and some soft plastics.

The Sonic PRO series can be designed in either a closed-coupled or remote design. The system is fully customizable, designed to meet the unique needs of any facility from coffee houses and restaurants to hospitals, schools and other institutions.

Model	Description	Capacity	Suggested List Price
SONIC 5 PRO	5 Hp - 24" Advanced Food Waste Reduction System	750 lbs	Contact Factory
SONIC 5 PRO-R	5 Hp - 24" Advanced Food Waste Reduction System with remote	750 lbs	Contact Factory
SONIC 7 PRO	7 Hp - 30" Advanced Food Waste Reduction System	1,000 lbs	Contact Factory
SONIC 7 PRO-R	7 Hp - 30" Advanced Food Waste Reduction System with remote	1,000 lbs	Contact Factory

Options

Remote start-stop station (unmounted)	Contact Factory
Trough magnet package	Contact Factory
6ft wash down hose	Contact Factory
Direct Link: Features remote access service & performance diagnostics by the Champion factory technical support team	Contact Factory
Direct Link Plus: Features remote access service & performance diagnostics by the Champion factory technical support team. Includes cloud storage & online user access. Temperature & performance data is stored via the cloud and is accessed through an online portal. Initial term for this upgrade is three years.	Contact Factory

NON STANDARD VOLTAGES: Contact Factory for availability and price. NOTE: Options prices apply only when ordered with machine.

Bi-Line by Champion



Bi-Line Systems are built to individual customer requirements and can combine a high-volume Champion flight or rack machine that feature low energy and water consumption levels, with a Bi-Line Conveyor for continuous high efficiency, space saving and maintenance-free warewashing.

The system's flexible design eliminates high traffic patterns for loading and unloading service ware, saving time and reducing handling and breakage. Space-saving conveyor layouts are available in vertical, slim line or standard configuration and can even transport wares from multiple floor levels.

Soiled Tray Conveyors

Model	Description	Suggested List Price
CS-207	Dual 7" Flex Belt Accumulator	Contact Factory
CS-110	Single 10" Flex Belt Accumulator	Contact Factory
CS-210	Dual 10" Flex Belt Accumulator	Contact Factory
PS-110	Single 10" Pin & Slat Accumulator	Contact Factory
PS-210	Dual 10" Pin & Slat Accumulator	Contact Factory
PS-112	Single 12" Pin & Slat Accumulator	Contact Factory
MT-12	Single 12" Mat Top Belt	Contact Factory
MT-18	Single 18" Mat Top Belt	Contact Factory

Accumulators

RTP	Rotary Tray Accumulator – Projection	Contact Factory
RTS	Rotary Tray Accumulator – Slim Line	Contact Factory
VAS	Vertical Tray Accumulator	Contact Factory

Gravity Rollers

GRS-24	24" Soiled Gravity Rollers	Contact Factory
GRS-21	21" Soiled Gravity Rollers	Contact Factory
GRC-21	21" Clean Gravity Rollers	Contact Factory

Tray Make-Up Conveyors

FBM-10	Fabric Belt Tray Make-Up Conveyor	Contact Factory
---------------	-----------------------------------	------------------------

NON STANDARD VOLTAGES: Contact Factory for availability and price. NOTE: Options prices apply only when ordered with machine.

Terms & Conditions of Sale

- 1. TERMS.** Champion Industries is referred to herein as "Seller." The purchaser of the machine(s) and/or part(s) subject hereto ("Property") is referred to as "Buyer."

No terms or conditions other than those stated herein shall be applicable to the sale of the Property unless incorporated as part of the order or quotation constituting a part of the Purchase Agreement described below. Any order for Property, and the sale thereof by the Seller to the Buyer, shall be governed by the North Carolina Uniform Commercial Code, by the agreement of the parties, and by any applicable policy statement issued by the Seller.
- 2. PURCHASE AGREEMENT.** Any order for or offer to purchase the Property, excluding parts, shall not be binding on the Seller unless it is accepted in writing by the Seller's acknowledgment reflecting such acceptance. When so accepted it shall be binding in accordance with these Terms and Conditions of Sale. No modifications shall be permitted unless agreed to in writing by the parties. Unless otherwise specifically agreed in writing, any delivery or shipping date shown, or mentioned by the Seller, is furnished only for the convenience of the Buyer, is estimated, and is not a date by which the Seller has agreed to ship or deliver the Property; provided however, after production of a machine, payment for the machine is due within terms, unless Seller otherwise agrees.

Change orders for the Property will not be permitted without the Seller's consent. The Seller may impose a charge in connection with any change order that the Seller accepts.

Each shipment or delivery is subject to Seller's approval of Buyer's creditworthiness including, without limitation, determination that Buyer is not in default on any obligation to Seller.
- 3. PRICES.** Unless otherwise agreed: (i) all prices will be F.O.B. Factory, (ii) and all sales are subject to the terms and pricing of the applicable policy in effect on the date that the order for the Property is accepted. All invoices not paid within 30 days of the date of their issue shall be subject to a delinquency charge of 1.5% per month (41095% per day), or such lesser amount as may be the maximum rate permitted by law. Buyer agrees to pay all costs of collection including such reasonable attorneys' fees as may be allowed by law.
- 4. DELIVERY.** If a delivery is F.O.B. Factory, shipment of the Property will be in accordance with Buyer's instructions when reasonable and practical. In the absence of shipping instructions on F.O.B. Factory, or in the case of F.O.B. Destination, Seller may ship by such method or carrier as Seller may deem reasonable. For F.O.B. Factory shipments, the risk of loss of Property shall pass to the Buyer upon delivery of the Property to a public carrier.

The Seller shall not be liable for failure in the delivery of the Property as a result in whole or part, of fire, flood, tornado, hurricane or other acts of God; because of any casualty, accident, embargo, strike, lockout, work stoppage, war or government regulation; or for any other reason beyond the Seller's reasonable control including, but not limited to, late delivery, or nondelivery, of any part or component of the Property that is the subject hereof.
- 5. DISCLAIMER OF WARRANTIES AND LIMITATIONS OF DAMAGES.** MACHINES AND PARTS ARE WARRANTED ONLY TO THE EXTENT REFLECTED IN THE SEPARATE MANUFACTURER'S LIMITED WARRANTY PROVIDED. THE SELLER MAKES NO OTHER WARRANTIES, EXPRESS OR IMPLIED, INCLUDING, BUT NOT LIMITED TO, ANY WARRANTY OF MERCHANTABILITY, OR FITNESS OF PURPOSE. THE SELLER SHALL NOT BE LIABLE TO BUYER FOR INCIDENTAL OR CONSEQUENTIAL DAMAGES. In case of a breach by the Seller, the Buyer's exclusive remedy shall be, at the Seller's option, repair or replacement, or the return of the machine to the Seller and refund to the Buyer of the purchase price. In no event shall the Seller's liability exceed the purchase price of the machine.
- 6. MACHINE AND SPECIAL PARTS ORDER CANCELLATION AND RETURN.** Buyer acknowledges that the Seller will have incurred costs in connection with the sale of a machine or special parts order; that if the machine or special parts order is sold by the Seller pursuant to a confirmed order that Buyer's failure to accept delivery of a machine or special parts order as to which Seller has given its acceptance will result in damage to the Seller which will be difficult to ascertain; and that liquidated damages as follows are reasonable and will be paid by Buyer if the machine or special parts order is not purchased, or returned in new condition.

 - (a) As to standard machines, the Buyer will pay the Seller, as liquidated damages, 25% of the agreed price of the machine.
 - (b) As to all other machines and special parts orders, the Buyer will pay the Seller, as liquidated damages, the following percentages of the agreed price of the machine or special parts order:
 - I. 25% of the agreed price upon cancellation before production of the machine or special parts order begins,
 - II. 35% of the agreed price after production of the machine or special parts order has begun and before the machine or special parts order is substantially completed, and
 - III. 50% of the agreed price after substantial completion or return of the machine or special parts order in new condition.
- 7. DISPUTE RESOLUTION.** Any unresolved dispute arising in connection herewith shall be resolved by arbitration in Winston-Salem, North Carolina, under the rules of the American Arbitration Association, and judgement upon the award rendered by the arbiter(s) may be entered in any court.
- 8. GENERAL PROVISIONS.** The sale of the Property herein identified shall be governed by the law of North Carolina. Failure or delay of the Seller in exercising any right, power or privilege shall not operate as a waiver of any such right, power or privilege. If any portion of these Terms and Conditions of Sale shall be held to be invalid or unenforceable, all other provisions shall nevertheless remain valid and enforceable in accordance with their terms.

NON STANDARD VOLTAGES: Contact Factory for availability and price. NOTE: Options prices apply only when ordered with machine.

Limited Warranty

Champion Industries, Bi-Line Systems (herein referred to as ("The Companies"), 3765 Champion Blvd., Winston-Salem, North Carolina, 27105) warrants machines, and parts, as set out below:

WARRANTY OF MACHINES: "The Companies" warrant all new machines of its manufacture bearing the name Champion or Bi-Line and installed within the United States to be free from defects in material and workmanship for a period of one (1) year from the date of installation or fifteen (15) months from the date of shipment by "The Companies", whichever occurs first. Products shipped outside of United States are not covered by this Limited Warranty. The warranty registration card must be returned to "The Companies" within ten (10) days after installation or online to "The Companies" at www.championindustries.com/warranty-registration for the United States or by fax using the form provided at the front of this manual. If the warranty card, fax or email is not sent to "The Companies" within 15 days, then the warranty will expire after 15 months from the date of shipment. "The Companies" shall not assume any responsibility for additional installation costs in any area where there are jurisdictional problems with local trades or unions. If a defect in workmanship or material is found to exist within the warranty period, "The Companies", at their election, will either repair or replace the defective parts, the machine or accept return of the machine for full credit. In the event that "The Companies" elect to repair, the labor and work to be performed in connection with the warranty shall be done by "The Companies" authorized service agent during regular working hours and shall be covered at normal labor rates. Overtime charges are the responsibility of the equipment purchaser. Warranty travel is covered up to 50 miles from the authorized service technician's servicing office. If travel exceeds 50 miles, then the end user is responsible for any additional travel expense. Service calls initiated under warranty that are found to not contain any defects in materials or workmanship, shall not be covered by "The Companies". Defective parts become the property of "The Companies". Use of non-OEM replacement parts not authorized by "The Companies" shall relieve "The Companies" of all liability in connection with its warranty. In no event will "The Companies" warranty obligation exceed "The Companies" charge for the machine. Machines that come with a factory paid start-up shall be limited to one authorized service call. Installation problems or delays of any kind shall not be covered by "The Companies" and are the sole responsibility of the equipment purchaser.

The following are not covered by "The Companies" warranty:

- a. Element tubes, chemical squeeze tubes, O-rings, or curtains
- b. Vacuum breakers
- c. Adjustments to structural or mechanical components covered by recommended maintenance procedures
- d. Replacement of fuses, resetting overload breakers, or high limit thermostats
- e. Adjustment of thermostats, or temperature controlling devices
- f. Adjustment of clutches
- g. Adjustments of water pressure(s)
- h. Adjustments of chemical pumps
- i. Opening or closing of utility supply valves or switching of electrical supply current

- j. Cleaning of valves, strainers, screens, nozzles, or spray pipes
- k. Performance of regular maintenance and cleaning as outlined in the operator's guide
- l. Damages resulting from water conditions, accidents, alterations, improper use, abuse, tampering, improper installation, low voltage conditions, inadequate wiring, outdoor use, or failure to follow maintenance and operation procedures
- m. Wear on pulper cutter blocks, pulse vanes, and auger brush
- n. Damages due to improper storage
- o. Special installations or applications, including remote locations, are limited in coverage by this warranty. Any installation that requires additional work, and/or travel to gain access to a machine for service is the sole responsibility of the equipment purchaser

Defects not covered by the warranty but not limited to are:

1. Damage to the exterior or interior finish
2. Damage caused by improper connection to utility service other than that designated on the rating plate
3. Inadequate or excessive water pressure
4. Corrosion due to foreign materials, improper water supplies, improper chemicals, or chemicals dispensed in excess of recommended concentrations
5. Failure of electrical components due to connection of chemical dispensing equipment installed by others
6. Leaks and damage due to poor water quality
7. Leaks and damage caused by the installer, including machine table connections
8. Leaks or damage caused by chemical dispensing equipment connections installed by others
9. Failure to comply with all local building codes
10. Damage caused by labor dispute

WARRANTY OF PARTS: "The Companies" warrant all new machine parts produced or authorized by "The Companies" to be free from defects in material and workmanship for a period of 90 days from the date of invoice. If any defect in material and workmanship is found to exist within the warranty period, "The Companies" will refund the cost of the defective part.

DISCLAIMER OF WARRANTIES AND LIMITATIONS OF LIABILITY.

"THE COMPANIES" WARRANTY IS ONLY TO THE EXTENT REFLECTED ABOVE. "THE COMPANIES" MAKE NO OTHER WARRANTIES, EXPRESS OR IMPLIED, INCLUDING, BUT NOT LIMITED TO, ANY WARRANTY OF MERCHANTABILITY, OR FITNESS OF PURPOSE. "THE COMPANIES" SHALL NOT BE LIABLE FOR INCIDENTAL OR CONSEQUENTIAL DAMAGES. THE REMEDIES SET OUT ABOVE ARE THE EXCLUSIVE REMEDIES FOR ANY DEFECTS FOUND TO EXIST IN "THE COMPANIES" MACHINES AND PARTS. ALL OTHER REMEDIES ARE EXCLUDED, INCLUDING ANY LIABILITY FOR INCIDENTALS OR CONSEQUENTIAL DAMAGES.

Champion Industries or Bi-Line Systems does not authorize any other person, including persons who deal in Champion Industries or Bi-Line Systems machines, to change this warranty or create any other obligation in connection with Champion Industries or Bi-Line Systems machines.

NON STANDARD VOLTAGES: Contact Factory for availability and price. NOTE: Options prices apply only when ordered with machine.

Champion[®]

The Dishwashing Machine Specialists



**PP-11 Pro
Coming Soon!**



**OVER 130 YEARS
OF KEEPING IT CLEAN**

3765 Champion Boulevard | Winston-Salem, NC USA 27106 | 800-532-8591
ChampionIndustries.com

